

ROCK-XL

CEAT
SPECIALTY

FEATURES

- Specially formulated for heat
- Cut resistant

BENEFITS

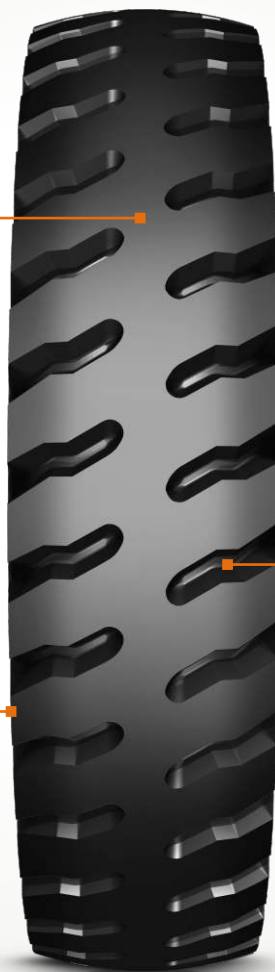
- Resists cuts and snags
- Optimized wear

FEATURE

- Larger footprint

BENEFITS

- More ground contact area
- Improved stability



FEATURE

- Deep tread with robust casing

BENEFIT

- Better mileage and durability



LIST OF SIZES

SIZE	PR
12.00-24	20
16.00-25	32
16.00-25	40
18.00-25	40
18.00-33	40
21.00-25	40
21.00-35	36
24.00-35	48

All tyres conform to ETRTO & TRA standards. Sizes available as of 10/2020.



Size	PR	Type	Rim Width in	Flange Height in	Unloaded Dimension		Static Loaded Radius	Rolling Circum	Load Capacity			
					SW	OD			Transport 50kmph/ (30mph)		Loading 10kmph/ (5 mph)	
									Max load	Infl. Prs.	Max load	Infl. Prs.
					mm/in	mm/in			kg	bar	kg	bar
		lbs	psi	lbs	psi							
16.00-25	32	TL	11.25	2	432	1493	682	4420	7300	6.5	12500	8.75
					17	59	27	174	16090	94	27560	127
16.00-25	40	TL	11.25	2	432	1493	682	4420	8200	8	14500	10
					17	59	27	174	18080	115	31970	145
18.00-25	40	TL	13.00	2.5	498	1673	764	4952	9750	7.0	17000	9.5
					20	66	30	195	21500	102	37480	138
18.00-33	40	TL	13.00	2.5	498	1877	866	5556	11200	7.0	19500	9.5
					20	74	34	219	24690	102	42990	138
21.00-25	40	TL	15	3	585	1759	800	5140	11850	6.25	20600	8.25
					23	69	31	202	26125	91	45415	120
21.00-35	36	TL	15.00	3.0	595	2052	953	6125	14000	6.25	24300	8.25
					23	81	38	241	30865	91	53570	120
24.00-35	48	TL	17.00	3.5	653	2175	998	6390	18500	6.5	31500	8.5
					26	86	39	252	40785	95	69445	125

All tires confirms ETRTO T&RA & STRO standards

Size	PR	Type	Rim Width in	Flange Height in	Unloaded Dimension		Static Loaded Radius	Rolling Circum	Load Capacity (on hard Improved Surface)		
					SW	OD			Load / Speed Index	Max Load	Infl. Prs.
										kg/lbs	
					kg	bar					
mm/in	mm/in	mm/in	mm/in	lbs	psi						
12.00-24	20	TT	8.5	1.3	328	1257	590	3720	155 F	3875	7.9
					13	49	23	146		8540	115

All tires confirms ETRTO T&RA & STRO standards

